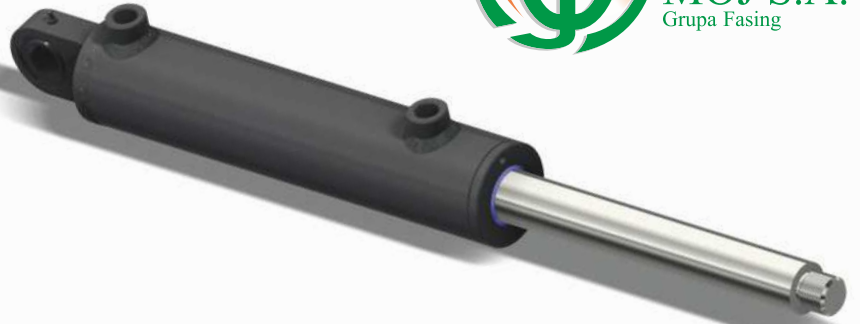




MOJ S.A. 1913
Grupa Fasing



KUŹNIA OSOWIEC



PRODUCT CATALOG

HYDRAULIC CYLINDER SHD...

Hydraulic cylinders are used in agricultural machinery and industrial equipment as well as construction equipment.

In addition to standard hydraulic cylinders, we also manufacture cylinders according to the customer's design and requirements.

The piston rod of the actuator may be equipped with a rod made of MnV6 material with a nickel-chrome coating NiKrom 350 having corrosion resistance in accordance with class 10 acc. ISO 10289.

The actuators can work in the range of nominal pressures of 20 MPa and maximum 25 MPa at operating temperatures from -30 to + 80°C or as customer requirements.



***** Ask us, write us, call us!
We will meet your requirements*****



OUR OFFER:

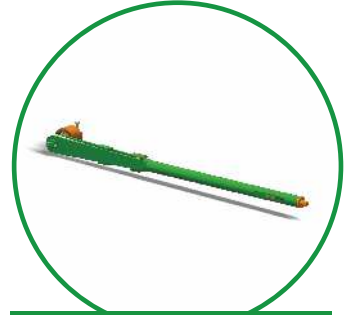
- Couplings for machines and devices up to 1000kW and small drilling equipment with hydraulic and pneumatic drive
- hot forged steel forgings 0.1-25 kg
- making forgings based on the delivered one documentation or product specimen
- preparation of forgings documentation in the technique spatial CAD / CAM including ours forging technology
- making forging tools
- heat and mechanical treatment of forgings
- shot blasting
- cold and hot calibration



SET OF DUAL COUPLING ASSEMBLY



SET OF GEAR COUPLINGS WITH THE FDMM SHAFT



KD TORQUE SPANNER



GIGANT COUPLING



SH ROTO P FLUID COUPLING



ONE-WAY COUPLING SJ



MOJ COUPLING



DUAL B COUPLING



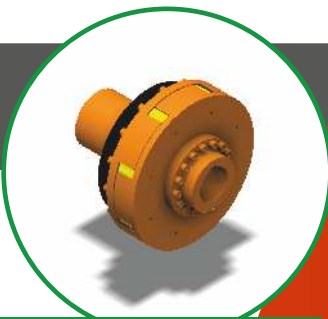
SPR COUPLING



FINGER P COUPLING



SPG 1250 BELT MINING COUPLING



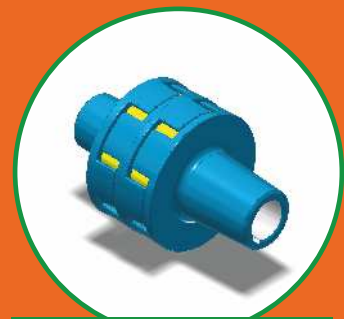
COUPLING SET500



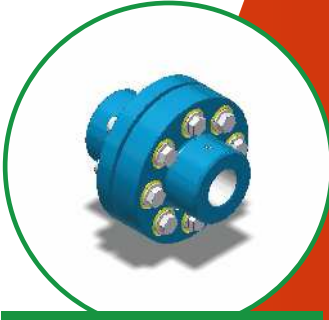
COUPLING SP



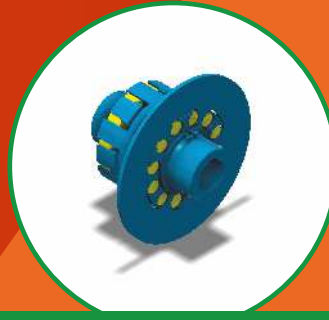
COUPLING SPIN



COUPLING SPP-100



COUPLING SW-MOJ



**TYTAN S360
COUPLING WITH
SECURITY RINGS**



**HYDRAULIC CYLINDER
ENDS**



CONTROL LEVER



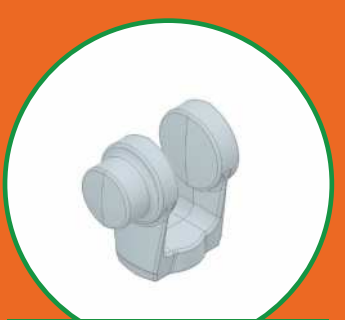
CONTROL LEVER



**HYDRAULIC CYLINDER
ENDS**



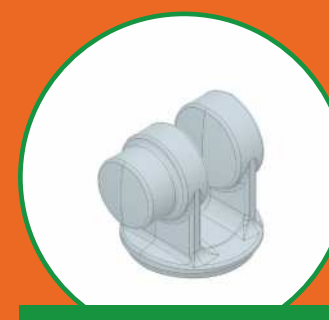
FLANGE



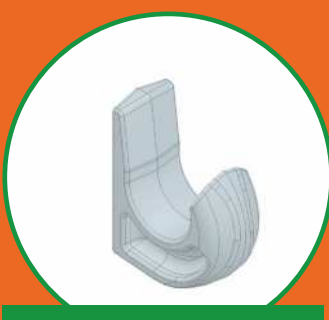
CLEVIS



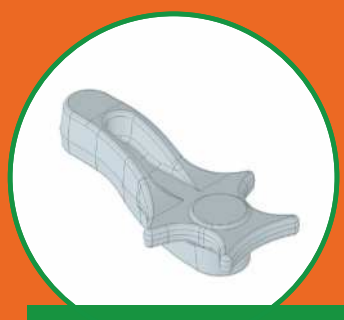
CONTROL LEVER



**HYDRAULIC CYLINDER
ENDS**



**EXCAVATOR BUCKET
HOOK**



**LOWER CONTROL
LEVER**



**HYDRAULIC CYLINDER
ENDS**



**HYDRAULIC CYLINDER
ENDS**



CONTROL LEVER



**HYDRAULIC CYLINDER
ENDS**







CONTACT

MOJ S.A.

 Tokarska 6 Street
40-859 Katowice, Poland
 +48 32 604 09 02
+48 32 604 09 01
 sekretariat@moj.com.pl
marketing@moj.com.pl

Kuźnia Osowiec Branch

 Fabryczna 1 Street
46-023 Osowiec, Poland
 +48 77 421 24 20
+48 77 421 24 20 ext. 103

WWW.MOJ.COM.PL