



KONKO S.A.

COMPANY PRESENTATION

Mission _ Who we are? _ History and Ownership _ Location
Equipment _ Capacity _ Scope of work _ Quality assurance system
Certificates _ Projects and References _ What can we do for you?



OUR MISSION

KONKO S.A.

”

The mission of the company is to meet customer requirements in terms of quality and on-time service, so these values will lead our customers to trust and return for further cooperation to achieve mutual benefit.

”



WHO WE ARE?

KONKO S.A.

We are mid-sized company which provides complex services of steel construction fabrication to customers requiring high quality of machining and welding based on the client's documentation.

We benefit from the decades of experience, serving mainly mining and steel-making industries but also other branches, believing that the most important asset are our employees, who have appropriate competence and knowledge to meet the highest needs of our customers.





HISTORY AND OWNERSHIP

KONKO S.A.

1992 Company was created as a joint venture Euro Construction Poli Poland. The shareholders were: Halbach & Braun Wuppertal - Germany, Vandeput Constructies Zonhoven - Belgium, Prim S.A.- Mysłowice, Poland.

1996 German concern Deutsche Bergbau-Technik GmbH in Lünen acquired manufactural part of Halbach & Braun and Vandeput shares.

1998 The sales department was joined to Euro Construction, and the company changed its name to DBT Polska.

2001 DBT GmbH purchased LONG-AIRDOX, and the scope of production expanded from underground conveyors to roof support, shearer and roadheader components.



HISTORY AND OWNERSHIP

KONKO S.A.

2007 Owner of DBT GmbH - concern RuhrkohleAG, sold its capital to an American concern - Bucyrus International Inc. Name of the company was changed to Bucyrus Polska Sp. z o.o.

2009 New owner - Bucyrus decided to move its production to Ostrava (Czech Republic) and to sell Polish production facilities; one of the Executive Board Members bought part of Bucyrus Polska; KONKO Sp. z o.o has been established.

2013 KONKO Sp. z o.o. bought MANTRA Sp. z o.o. and expanded its business activity with mining cable service and repair; by owning a truck fleet it offered local and international transportation services. At that time, the entity changed its form from LLC to PLC and became KONKO S.A.

2016 KONKO S.A. established strategic cooperation with Capital Group FASING Plc.



LOCATION IN POLAND

KONKO S.A.

580 km
~ 6 h drive
DISTANCE TO
SEA PORT IN SZCZECIN

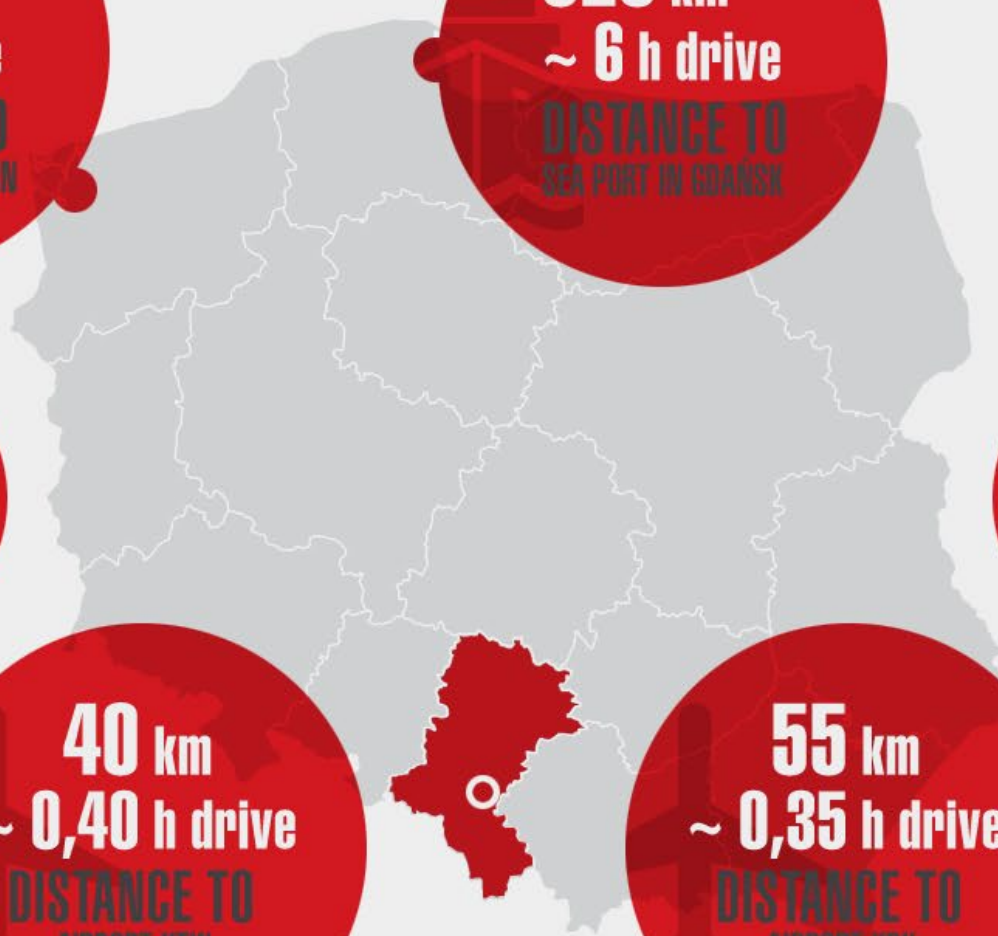
525 km
~ 6 h drive
DISTANCE TO
SEA PORT IN GDAŃSK

ADJACENT
TO HIGHWAY
A4 EAST - WEST

ADJACENT
TO HIGHWAY
A1 SOUTH - NORTH

40 km
~ 0,40 h drive
DISTANCE TO
AIRPORT KTW
IN KATOWICE

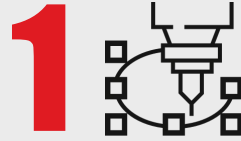
55 km
~ 0,35 h drive
DISTANCE TO
AIRPORT KRK
IN KRAKÓW





EQUIPMENT

KONKO S.A.



1
PLASMA BURNER
CNC 3D



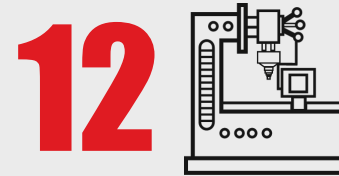
3
BEVELLING TABLES



3
RADIAL BORING
MACHINES



19
JIB CRANES
0.5-2T



12
MILLING MACHINES



1
ROBOTISED BEVELLING STATION



3
OXY-GAS BURNERS



4
HYDRAULIC PRESSES



9
SWL GANTRY CRANES
2-20T



40
WELDING MACHINES



EQUIPMENT

KONKO S.A.

Big Borer x-5940, y-2640, z-1000 turntable 2500 x 2500 - 20 T

CNC OXY-GAS burner with table 3500 × 30000

CNC PLASMA burner 3D with table 3200 x 8000

WELDING machine MAG

3D OXY Chamfering robot 10000 x 3100

MILLING machine Hydraulic PRESS 320 T

Gantry CRANE SWL – 20T, hook H-6 m

Shot-blasting machine Multi-radial DRILLING machine



150

LOCKSMITH
WELDING
MACHINING
PAINTING
QUALITY
CONTROL



6000 m²

45 WELDING
STANDS
15 ASSEMBLY
STANDS
4 HALLS



6500 t

STEEL
CONSTRUCTION/YEAR

CAPACITY



SCOPE OF WORK

KONKO S.A.

STEEL STRUCTURES AND CONSTRUCTIONS

HEAVY TONNAGE construction - single component **30 t unit**

LARGE structures - top order - commercial pavilion construction

L - 25 m, W - 10 m, H - 10 m, weight - 300 t

CONSTRUCTION structures, chutes, conveyors for mining

COMPONENTS of roof supports: bases, goaf supports and canopies

CONSTRUCTIONS for land and water building CONSTRUCTIONS of commercial halls

OVERHAUL SERVICES

Overhaul of mining machines
or its components

RENOVATION SERVICES

Renovation and repairs for mining,
metallurgy, and energy sectors



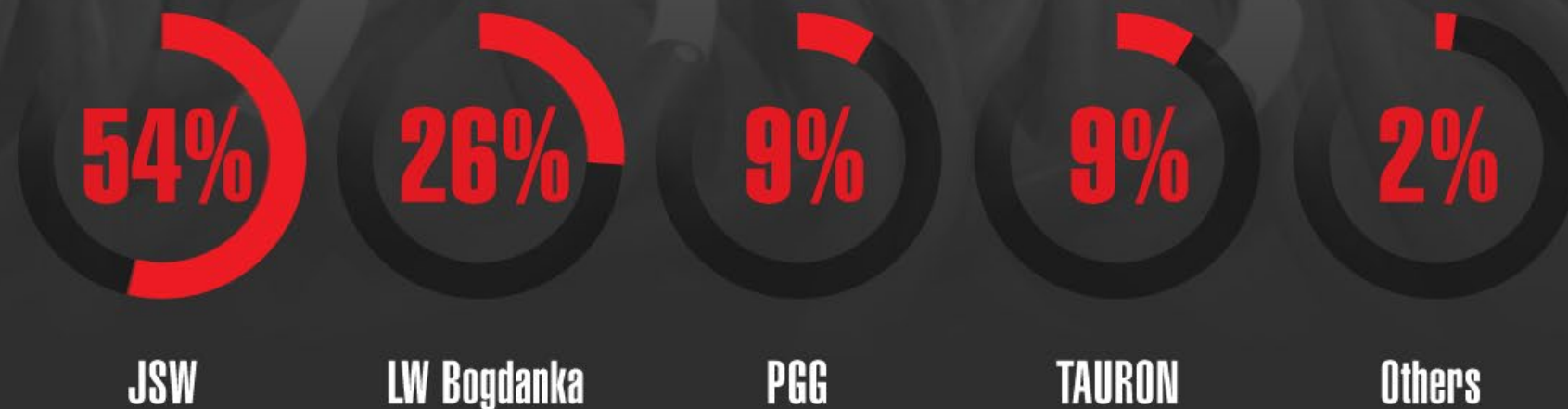
CABLE RESTORATION

KONKO S.A.

Wissartech Company, operating since 1994,
was acquired in whole in 2017 by KONKO S.A.
with all rights, agreements and personnel.

We hold positive opinions of: Polish Centre of Research and Certification S.A. (PCBC),
iTi Innovative Technologies Institute, Institute of Innovative Technologies EMAG.

Customers for cable restoration services

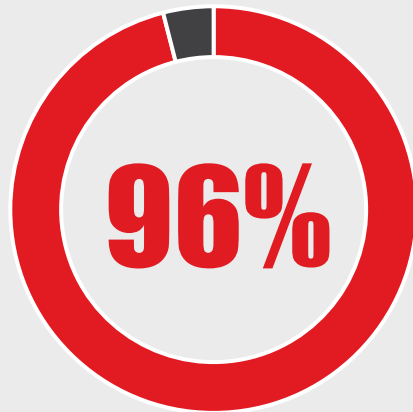




PRODUCTION SPLIT BY INDUSTRY

KONKO S.A.

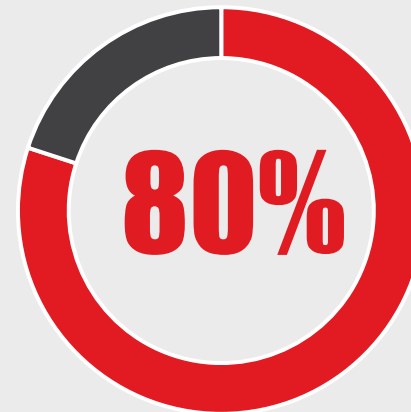
2009-2013



2014-2016



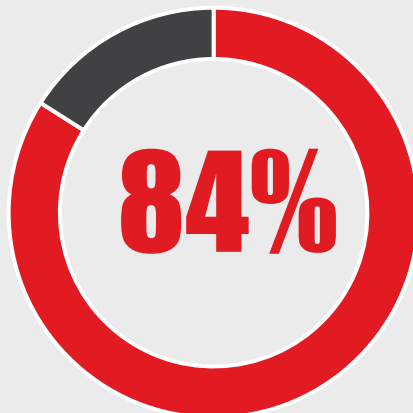
2017-2018



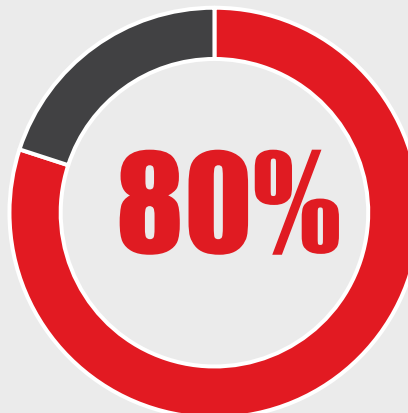
2019



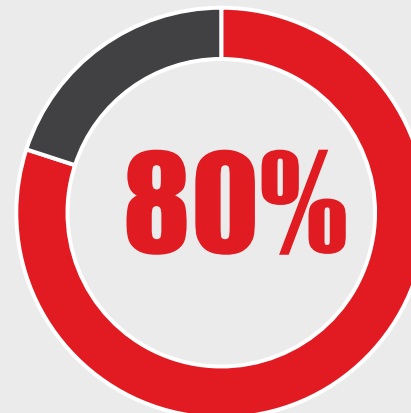
2020



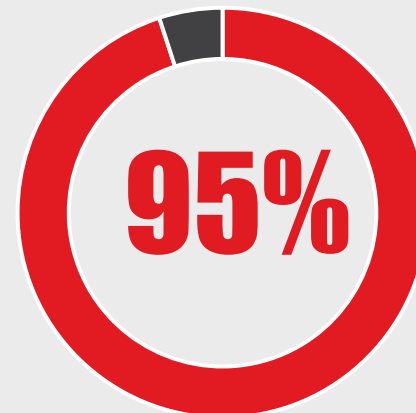
2021



2022



2023



MINING

REMAINING INDUSTRIES:

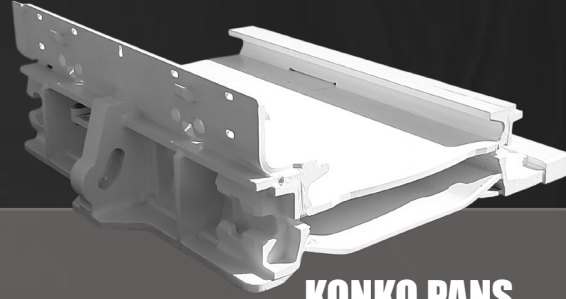
construction, construction and demolition machines, cranes and excavators, railway, others



QUALITY

CERTIFICATES

- **ISO 9001:2015**
- **DIN EN ISO 3834-2**
- **OBAC**
CAPACITY ASSESSMENT OF REPAIR FACILITIES
- **EN 15085-2 CL1**
WELDING LICENCE FOR RAILWAY VEHICLE COMPONENTS, AT THE HIGHEST LEVEL CL1
- **EN 1090-2 EXC3**
CERTIFICATE CONFORMITY OF FACTORY PRODUCTION CONTROL -LOAD-BEARING ELEMENTS AND THEIR ASSEMBLIES MADE OF STEEL UP TO CLASS EXC3 WG EN 1090-2



KONKO PANS



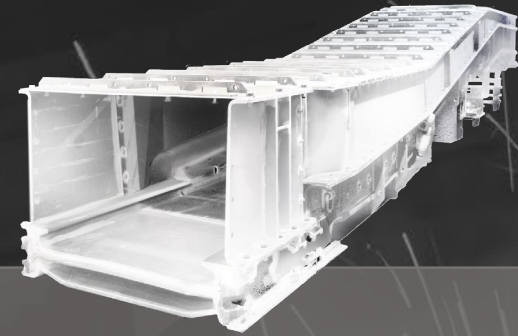
SPILL PLATES



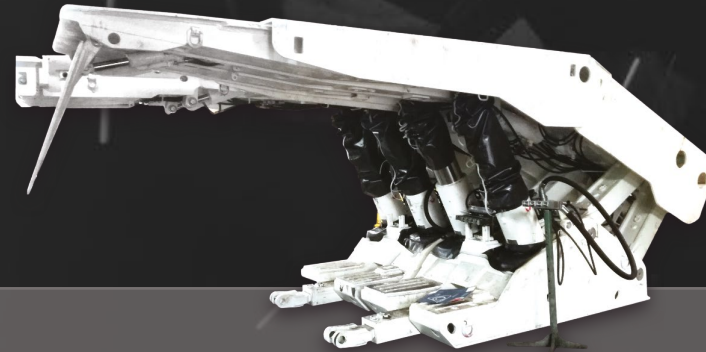
CANOPIES



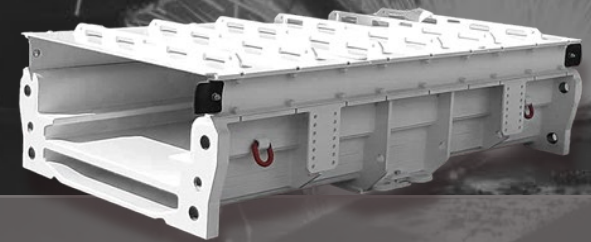
CRUSHERS



STAGE LOADERS



MECHANISED SUPPORTS



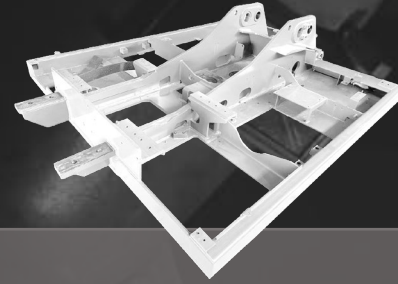
PANS

PROJECTS

KONKO S.A.



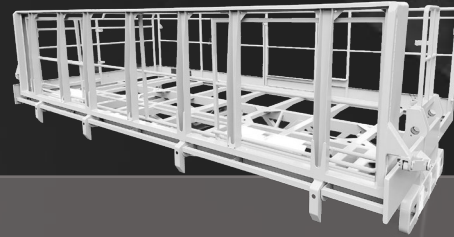
CONTAINERS



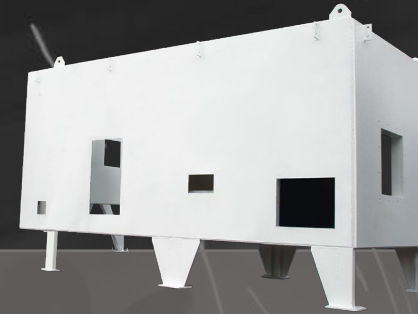
LOADER FRAMES



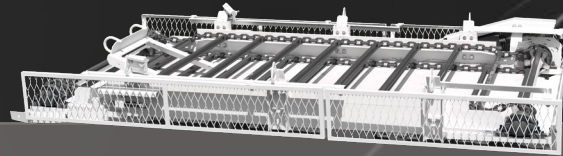
LOADER ARMS



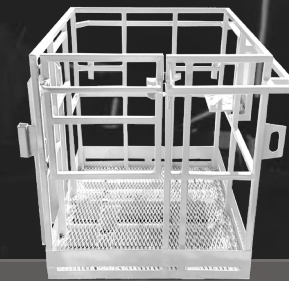
WORK PLATFORMS



COMPRESSOR CASINGS



ELEMENTS OF CLEANING STATION



OFF-SHORE STRUCTURES



EXHAUST DUCTS

PROJECTS



REFERENCES





WHAT CAN WE DO FOR YOU?

KONKO S.A.

Many years of experience
in the execution of contracts

Experienced management
and engineering staff

Fabrication on time according
to the schedule

Wide base of partners and suppliers

Excellent references from customers

Flexibility in situations requiring changes

The model as-built documentation



**WE WARMLY
INVITE YOU TO
COOPERATION**



CONTACT

TEL. +48 (32) 31 70 550

FAX +48 (32) 31 70 551

E-MAIL konko@konko.pl

www.konko.pl
